

# MARKET SELECTION OVERVIEW

---

## COLLABORATIVE SOVEREIGN ENGAGEMENT ON CLIMATE CHANGE

November 2024

### PRI Association

Registered office: 25 Camperdown Street  
London, UK, E1 8DZ Company no. 7207947  
T: +44 (0) 20 3714 3220 W: [www.unpri.org](http://www.unpri.org) E: [info@unpri.org](mailto:info@unpri.org)



**United Nations  
Global Compact**

*An investor initiative in partnership with UNEP Finance Initiative and UN Global Compact*

## OVERVIEW

The PRI has worked with signatories to develop a quantitative model to identify markets of potential interest for engagement through the programme. Qualitative inputs are then used to determine where opportunities for engagement will provide the most value to signatories and sovereigns in accelerating the global transition to net zero and meeting commitments to the goals of the Paris Agreement.

This document provides an overview of how markets are assessed for engagement using these quantitative and qualitative inputs.

## MARKET SELECTION QUANTITATIVE MODEL

The model uses a series of publicly available climate risk, policy response and investor exposure metrics as a first-pass assessment to identify those markets with the best prospects for collaborative sovereign engagement. Metrics used in this model are outlined in Table 1.

Table 1: List of model inputs used to identify market shortlist

Metric	Source
<ul style="list-style-type: none"> <li>Investor exposure</li> </ul>	<ul style="list-style-type: none"> <li>Bloomberg <i>Global Aggregate Index</i></li> </ul>
<ul style="list-style-type: none"> <li>Market classification</li> </ul>	<ul style="list-style-type: none"> <li>Vanguard index constituents</li> <li>International Monetary Fund, <i>World Economic Outlook Data</i>, Group and Aggregate Information</li> </ul>
<ul style="list-style-type: none"> <li>Total emissions</li> <li>Emissions per capita</li> <li>Emissions per unit of GDP</li> <li>5-year emissions trajectory</li> </ul>	<ul style="list-style-type: none"> <li>Global Carbon Atlas</li> <li>OECD, <i>Environmental Database – Greenhouse Gas Emissions</i></li> </ul>
<ul style="list-style-type: none"> <li>Emissions reduction target rating</li> </ul>	<ul style="list-style-type: none"> <li>Climate Action Tracker</li> </ul>
<ul style="list-style-type: none"> <li>Oil reserves</li> <li>Oil consumption</li> <li>Gas reserves</li> <li>Gas consumption</li> <li>Coal reserves</li> <li>Coal consumption</li> </ul>	<ul style="list-style-type: none"> <li>The Energy Institute, <i>Statistical Review of World Energy</i></li> </ul>
<ul style="list-style-type: none"> <li>Physical risk exposure</li> </ul>	<ul style="list-style-type: none"> <li>University of Notre Dame, Notre Dame Global Adaptation Initiative</li> </ul>
<ul style="list-style-type: none"> <li>ASCOR performance</li> </ul>	<ul style="list-style-type: none"> <li>ASCOR</li> </ul>

Based on these quantitative inputs, the model below provides an overview of the level of investor exposure to climate-related risks across markets (Figure 1).

## MARKET SELECTION QUANTITATIVE MODEL

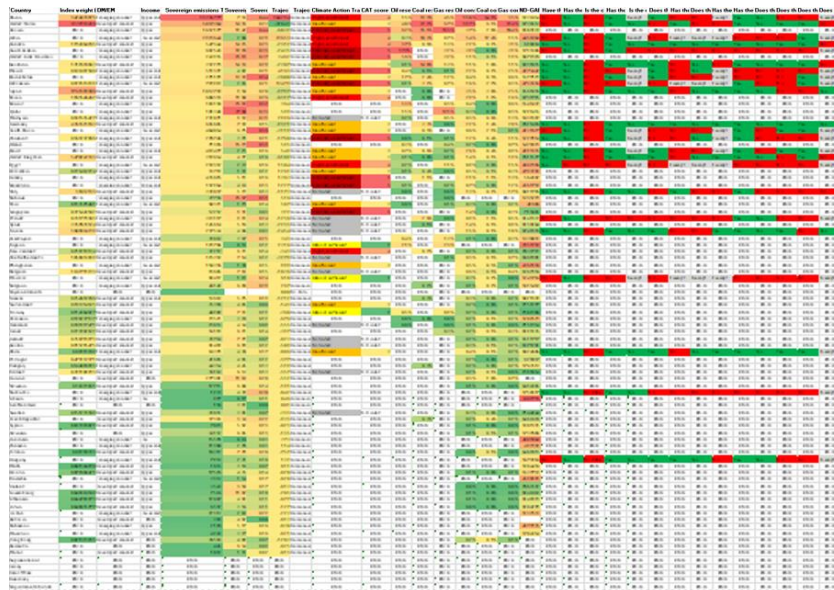


Figure 1: Quantitative model outputs for market selection (data has been intentionally blurred)

## QUALITATIVE OVERLAY

This model provides the basis to apply a series of qualitative inputs to determine which markets would be the most viable for engagement to be successful and provide the greatest value to signatories.

These include:

- Prospect for impact
- Signatory interest
- Domestic signatory support
- Political issues
- Qualified in-market support.

Potential additional markets for engagement will be discussed with interested PRI signatories and any decisions will be subject to PRI signatory preference and sufficient resourcing. Following all analysis and practical assessments of viability for an ongoing engagement programme, the PRI Executive will make a final decision on inclusion of any focus market after consulting with appropriate signatory advisory groups.

## DISCLAIMER

This document is provided for information only. It should not be construed as advice, nor relied upon. PRI Association is not responsible for any decision or action taken based on this document or for any loss or damage arising from such decision or action. All information is provided “as-is” with no guarantee of completeness, accuracy or timeliness and without warranty of any kind, expressed or implied. PRI Association is not responsible for and does not endorse third-party content, websites or resources included or referenced herein. The inclusion of examples or case studies does not constitute an endorsement by PRI Association or PRI signatories. Except where stated otherwise, the opinions, recommendations and findings expressed are those of PRI Association alone and do not necessarily represent the views of the contributors or PRI signatories (individually or as a whole). It should not be inferred that any third party referenced endorses or agrees with the contents hereof. PRI Association is committed to compliance with all applicable laws and does not seek, require or endorse individual or collective decision-making or action that is not in compliance with those laws. Copyright © PRI Association (2024). All rights reserved. This content may not be reproduced, or used for any other purpose, without the prior written consent of PRI Association.